

London March 28th 1850

His Royal Highness the Prince of Wales

To Morel & Hughes

Carlton House

- To Repairing the Fringe on Chairs in new dining room
& papering with your materials, sundries, under the direction
of Bosquet } "10"
- April, 4 To a Workman's Time assisting Bosquet in cleaning sundry
ornaments & bronze vases, girandoles, & other articles through-
-out the rooms } "14"
- To 4 shamois leather Skins delivered to Bosquet for sundry
purposes } 2 3/6 } "14"
- To one Dozen of Lap Books delivered as above } "1.6"

New Dining Room

- 19 To a very large & handsome mahogany Sideboard of
beautiful wood with high pilasters & shelves of the
same wood for the back, made to receive your plates
& glass, enriched in the piece & pilasters with rich carved
& bronzed ornaments as Bacchus thyrses, entwined with
leaves & grapes: supported on griffins as bronze (in
plaster temporary) resting on a plinth, the whole
length of sideboard } 182. 16.
- To 2 Plinths of fine mahogany highly polished placed
on preceding sideboard } 1. 2.

Carried Forward 185. 17. 6

Brought Forward

185. 17. 6

1810

Apr. 19 To another Plinth of polished wood as ebony placed on
the sideboard to support a temple } 2. 14. "

To Cabinet Maker's Time at Carlton House fitting
and fixing the sideboard with pilasters shelves glassed
in front of the windows of new dining room } 6. 18. "

Sundry Rooms or Pediment

To a Pair of high deal double Steps delivered to
Bosquet } 8. 18. "

To 11 Cases of shammois leather made to different dimensions
to cover sundry Girandoles delivered to Bosquet } 12. 16. "

To 12 yards of white Irish d^o. $\frac{3}{6}$ 2. 2. "

To a Piece of broad holland Tape d^o.

To a Piece of narrow string Tape d^o. } 3. 6

To $\frac{1}{2}$ lb. of white sewing Cotton d^o.

To Several Chairmen's attendance removing furniture to
& fro' divers rooms at Carlton House, also cleaning by
brushing, shaking &c. other articles of household furniture
& doing sundries under the direction of Bosquet } 1. 19. "

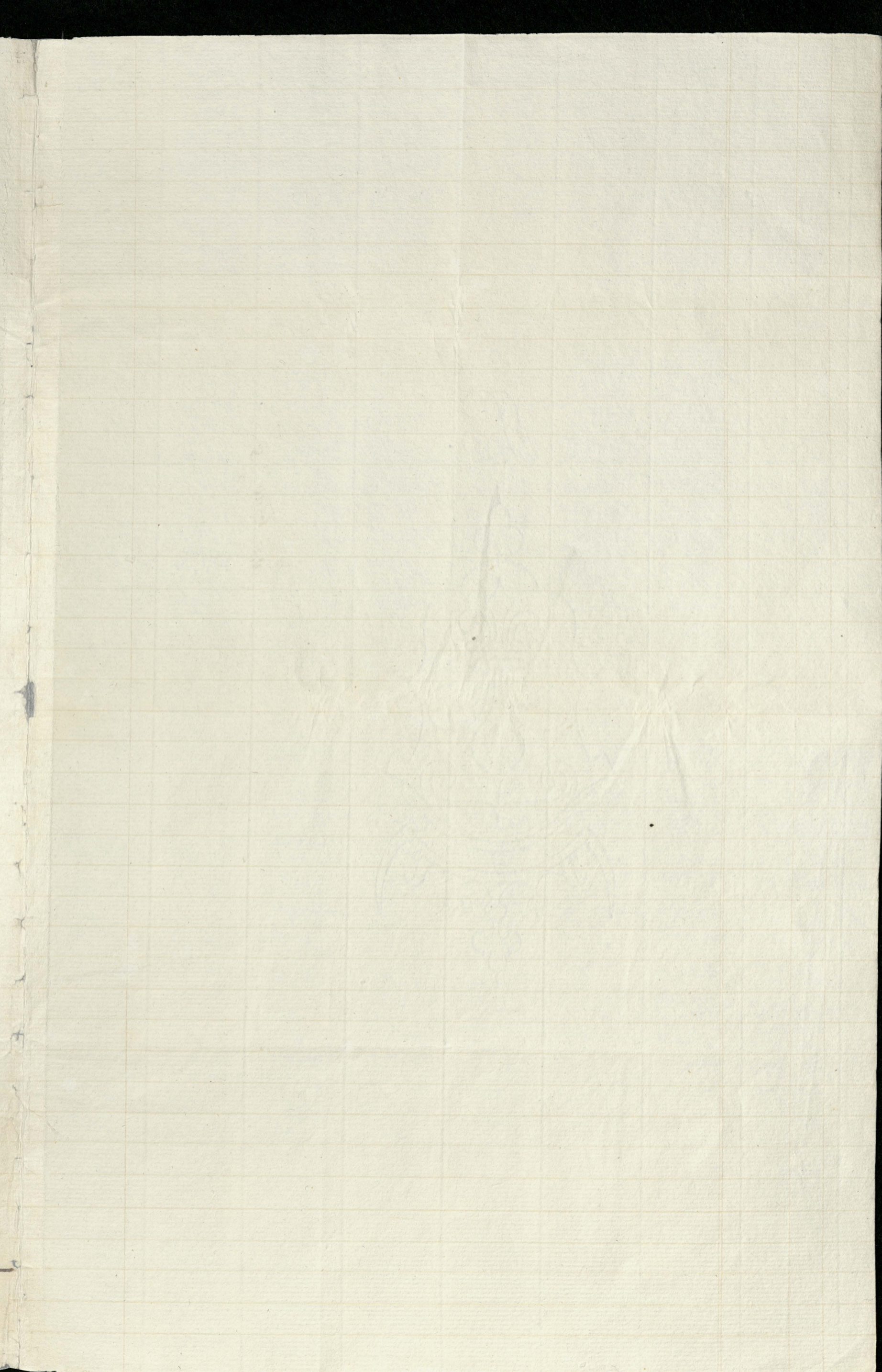
May 16 To a Piece of $\frac{1}{2}$ in. holland Tape delivered to Bosquet } 1. 6

To $\frac{1}{2}$ lb. of white sewing Cotton d^o.

24 To Putting in complete repair & altering a Sofa Bedstead
with an addition of wainscoat &c. & new castors to the
same: the whole done at Carlton House } 2. 14. "

Carried Forward

224. 3. 6



Wm. R. R. R. R.

1893. 6. 10

5th July 1810.

1810

From

Brought Forward 224. 3. 6

1810

May 24 To Repairing at Carlton House 2 Tables, one in Mr. Bosquet's room. & one in room adjoining kitchen, including traps plates, hinges, & screws } "11"

To Repairing & cleaning a high Pair of Steps } "17"

New Drawing Room

25 To making with your materials a Cover for a small Table in this room } "4. 6"

To Making of your brown holland 4 Covers to throw over the large vases } "18"

Pastry

To Remaking the 2 scarlet moirine Curtains for the window of this room } "8"

Pediment

To Remaking your green moirine Carpet Cover } "11"

To cleaning with brushes &c. and folding some furniture in pediment } "4. 6"

Stables Coachman's Room

To Heading with your rings, 4 Curtains & repairing the draperies for the 2 windows in this room } "4"

Carried Forward 228. 1. 6

Brought Forward 228. 1. 6

1810

June 7, To Several Workmen's & Women's Time at Carlton House
from May 25th last to this day, ripping the gimp,
cleaning the velvet, & gilding & sewing on your new gimp
in Ball Room on the 4 Sofas, 4 Tete a Tete, 4 Bergers
& 24 cabriole Chairs, also repairing all the loose covers
belonging to the same & the frame of one of the Sofas

23. 16. "

To Brass Pins, sewing silk, sewing cotton, & thread used
for the above purpose

1. 14. "

To Chairmen's attendance, uncovering all the furniture
in throne room, cleaning by brushing, shaking, & folding
the brown holland covers of this room, those of ball
rooms & others stored in pediment, removing bookcase
chairs, stools to & fro' sundry rooms, taking up the carpets
on principal staircase & inner hall removed to a place
out of the way

3. 6. "

Pavilion Brighton

Own Bed Room

To 4 large Blankets of superfine bath coating, bound
with white silk lace for the bed, delivered at Carlton
House

25. 6. "

To 6 D^o. to be used on the floor while dressing
delivered as above

21. 17. "

To a Screw Driver agreed for 2/- & delivered to Mr.
Judson

2. "

Carried Forward 304. 2. 6

Brought Forward

304. 2. 6

Carlton House

New Bed Room

1810

June 16 To Putting in complete repair your Polonese Bedstead cleaning & repairing the gilding, new stuffing with horse hair & fine canvas the head & foot boards including covering the stuffed parts with your blue embroidered satin, finished with a new silk gimp in colours to suit

63. 12.

To taking to pieces, altering & remaking your rich Polonese Bed Furniture, consisting of 4 Curtains, outside ornamental draperies, inside valances & bases, lining throughout with your buff silk & ornamenting the whole with your fringe including remaking a dress counterpane

14. 14.

To taking to pieces your 2 blue embroidered satin Window Curtains & draperies & remaking the same into 6 Curtains & 3 draperies of a new design for the 3 windows: lining the same throughout with additional new buff calico, curtains looped over carved & gilt patras

11. 11.

To 3 deal Laths including side pulleys, rod hooks, iron brackets & screws

16.

To 3 brass polished Rods with pulley ends

2. "

To Cleaning & Repairing the Gilding of your 2 Tete a Tete, recovering the stuffed parts with your embroidered satin finished on the edges with a new raised gimp

10. 18.

Carried Forward 407. 13. 6

Brought Forward 407.13.6

1810

- June 16 To Repairing & Cleaning the gilding of your 6 Bergers and new covering and ornamenting the stuffed parts to suit preceding } 22.10.
- 1 To D^o. D^o. D^o. your 6 Cabriole Chairs 18. "
- 1 To 2 yards of plain buff Calico used in addition for window drapery & glazing d^o. } 3/3 " 6. 6
- 1 To 7 " orange & black silk diamond Lace } 3/6 1. 4. 6
- 1 To 116 " silk raised Gimp in colours to correspond } 2/6 14. 10.
- 1 To 26 " plain Drawing Line } 2 " 4. 4
- 1 To 6 rich ornamental Patras carved & gilt in mat & burnished gold to loop up curtains } 15/2 4. 10.
- 1 To 1/2 yards of Buckram used for bandeaus } 2/6 " 3. 9
- 1 To 5 yards of Tannet to line Bandeaus of your buff silk } 1/10 " 9. 2
- 1 To Regilding in mat & burnished gold 138 ft. of your moulding for panels of this room } 4/8 32. 4.
- 1 To 98 feet of new carved & gilt moulding in addition to the above } 8/2 39. 4.

Sitting Room

To making of your yellow ground Chintz & blue lining 4 Curtains & 2 ornamental draperies, with festoons, echarpes, & fluted bandeaus for 2 windows: lining throughout & ornamenting the whole with silk pine & wandyke laces; counterlining & new fringing the draperies, made from a new design to be suspended from your laths, rods, & cornices & the curtains looped over rich patras } 6. 6.

Carried Forward 547.5.9

Brought Forward 547.5.9

1810

June 16 To Repairing the Gilding of your Sofa & adding a set of new brass castors; also new lathering the old castors } 1.18.

To Covering the stuffed parts of preceding Sofa with your chintz & white lining & making to suit separate cases for the 2 bolsters & 2 pillows, lining throughout & ornamenting the same with silk cord & fine lace in colours to correspond } 2.6.

To Repairing the Gilding of your 4 Cabriole chairs, covering, lining & ornamenting the stuffed seats, backs & elbows to correspond with the above } 3.14.

To Do. Do. Do. your 2 Tete a Tete & adding new castors } 3. "

To Cleaning & Repairing your 4 new tree cabinets & refreshing the bronze } 1.8.

Anti Room

To Making 2 Pair of Curtains & 2 Draperies for the windows to correspond in each respect with those for preceding sitting room } 6.6.

To 2 new deal Laths, including side pulleys, rod hooks, iron brackets & screws } 10.

To 2 brass polished Rods with pulley ends } 1.6.8

To Repairing the Gilding of your Sofa & cleaning, & lathering the castors } 1.18.

Carried Forward 569.12.5

Brought Forward 569^{..}12^{..}5

1810

June 16	To Covering, Lining, & Ornamenting the stuffed parts of Sofas and making separate cases for the 2 bolsters & pillows to correspond exactly with preceding room		2 ^{..} 6 ^{..}
	To Repairing the Gilding of your 4 Cabriolet Chairs covering & ornamenting the stuffed seats, backs & elbows to correspond		3 ^{..} 14 ^{..}
	To Regilding the Frames of your 2 large Elbow Chairs, covering & ornamenting the stuffed seats, backs & elbows to correspond with new castors		18 ^{..} 18 ^{..}
	To 10 yards of broad black & blue silk vandyke Lace used	$\frac{1}{10}$	18 ^{..} 4 ^{..}
	To 72 " " d ^o . fine Lace	$\frac{1}{2}$	4 ^{..} 4 ^{..}
	To 133 " narrow " D ^o .	$\frac{1}{1}$	7 ^{..} 4 ^{..} 1
	To 31 " rich Parisian Fringe in blue & black colours	$\frac{7}{2}$	26 ^{..} 7 ^{..}
	To 87 " blue & black silk Cord	9 ⁵	1 ^{..} 16 ^{..} 3
	To 6 " silk Galloon	3	1 ^{..} 6
	To 2 $\frac{1}{2}$ " Buckram used	$\frac{2}{6}$	6 ^{..} 3
	To 16 " silk Quality	9 ⁶	8 ^{..}
	To 52 " plain Drawing, Line	9 ²	8 ^{..} 8
	To 32 Waddings to counterline the draperies	$\frac{1}{2}$	1 ^{..} 17 ^{..} 4
	To 18 rich ornamental Patras carved & gilt in mat & burnished gold	15 ^{..}	13 ^{..} 10 ^{..}

Carried Forward 651^{..}11^{..}10

Brought Forward 651. 11. 10

1810

June 16, To Several Workmen's Time at Carlton House
fixing carved & gilt Polonese Bedstead with blue
satin embroidered furniture, also the laths, rods, cov-
-nices, window curtains & draperies in the new bed
room, sitting room, & anti room; Decorating the
whole with carved plaster & fixing the ornamental
mouldings to the panels of new bed room, sitting
room & anti room, afterwards taking down the bedstead
bed furniture, window curtains & draperies of the latter
room, removed to be stored up for the present including
screws, nails, needle points &c. used in the fixing

10. 11. 4

June 17 To 4 square deal Pedestals Stands to support your
china vases

6. 11. 1

Pavilion Brighton

To Packing in Hessian & Mat 10 Blankets & booking
the Package at the White Horse Cellar, Piccadilly

19. 6

Carlton House

Mr. Notier's Room

To Repairing the Frame of your mahogany Ellow
Chair, ripping the covering off stuffed seat, new covered
with black leather & brass nails

1. 11. 4

Carried Forward 671. 11. 4

Brought Forward 671 " 4

New Bed Room

1810

- June 20⁺ To taking off the ornamental ornaments from your mahogany couch bedstead, cleaning & polishing the wood work, also the ornaments & refixing the same; adding new carved & gilt center ornaments to the canopy finished with a new raised dome fluted with your chintz & calico & covering the stuffed ends of bedstead to correspond, ornamented with new rich silk gimp on the edges } 18 " 6 "
- To taking to pieces your hair Mattress, opening the contents & remaking the same in a tick case bordered & bound: including washing the old case } 2 " 4 "
- To taking to pieces your wool & hair Mattress carding the contents & remaking the same in a new striped holland case bordered & bound & washing the old case } 2 " 16 "
- To taking to pieces your wool & hair Mattress carding the contents & remaking the same in a new white Irish case bordered & bound & washing the old case } 4 " 2 "
- To making of your chintz & blue lining a handsome Bed Furniture consisting of 4 Curtains, outside ornamental draperies, inside valance draperies, lining throughout, binding, & ornamenting the same with silk feather & Star laces; counterlining & fringing with your blue fringe the draperies suspended from canopy over mahogany couch bedstead } 10 " 18 "

Carried Forward 709 " 6 " 4

Brought Forward 709⁶/₄

1810

- June 20, To Making, lining, counterlining, binding, ornamenting & fringing 6 large Curtains and 3 draperies for the 3 windows in this room finished in each respect to correspond with preceding bed furniture } 9⁹/₄
- To new Gilding in mat & burnished gold the frames of your 6 Carriage chairs with stuffed seats, backs & elbows } 22⁴/₄
- To covering the seats, backs, & elbows with your chintz & white lining, & ornamenting the same with a rich raised gimp & silk cord } 3³/₄
- To new Gilding in mat & burnished gold the frames of your 2 Tete a Tete stuffed & with seat cushions: new castors to the same } 8¹²/₄
- To covering, Lining, & Ornamenting to correspond the stuffed parts of the 2 Tete a Tete & making separate cases to suit for the seat cushions } 1¹⁶/₄
- To Making with chintz & Lining to correspond a loose Case for your Easy Chair with separate cases to suit for the seat & back cushions, ornamenting the same with galloon & silk cord } 1²/₄
- To altering the 2 Banquets (right & left of fire place) by reducing the length, adding a back stuffed with best hair in fine canvas and altering the seat cushion to fit } 9⁴/₄

Carried Forward 764¹⁶/₄

Brought Forward

764. 16. 4

1810

June 20 To Ornamenting the fronts of preceding Banquets
 with blue velvet enriched with a broad silk
 gimp & wandyke cord; also covering with your
 chintz & lining the stuffed parts & making
 separate cases to suit for the seat cushions &
 your 4 pillows, lining throughout & decorating
 the same with rich silk gimp & cord in various
 colours } 3. 3.

To 2 large Banquets to stand each side of folding
 doors with stuffed backs and ends each finished
 with a seat cushion & bolster filled with best
 horse hair in fine canvas } 34. 16

To 6 Pillows of fine down in best ticken cases
 for d^r. } 7. 16.

To Covering with blue velvet & decorating with
 silk gimp & cord the fronts of preceding banquets
 covering with your chintz & lining the stuffed
 backs & ends & making to suit separate cases for
 seat cushions, bolsters, & pillows, lining the
 same throughout, ornamenting & finishing d^r.
 to correspond with banquets before mentioned } 3. 6.

To 143 yards of silk feather Lace in chintz
 colours used } 7. 14. 11

To 11 yards of blue & black silk star Lace ^{3/6} } 1. 18. 6

To 36 " broad silk Gimp in various
 colours } 9. "

Carried Forward 832. 10. 9

Brought Forward 832.10.9

1810

June 20,	To 67 1/2 yards of narrow silk Gimp in various colours	1/10	6.3.9
	To 15 " of another sort of rich silk Gimp in colours to suit	4/6	3.7.6
	To 13 " blue Velvet	6/6	4.4.6
	To 161 " scarlet & white silk cord	10	6.14.2
	To 4 " scarlet silk Gallon	3	" 1"
	To 2 " Buckram for Bandeaux	2/6	" 5"
	To 53 Waddings to counterline the draperies	1/2	3.1.10
	To 2 ornamental Bell Rings & silk roses for your line		2.2.
	To Several Upholsterer's & Joiner's Time at Carlton House fixing the platform dome tester, & ornamenting the cornice of your canopy Bedstead, also fixing wood work to prevent the Bedstead touching the wall, hanging to Canopy the Bed Furniture with handsome draperies & fixing to the windows the chintz curtains & draperies in the new bed room decorating the whole with your line, tassels & rich patras covering with your blue druggat the platform to receive the couch, laying down the carpet & arranging the furniture: repairing sundry drawers and moving sundry articles of furniture to & fro' rooms under the direction of Bosquet		9.2.

Carried Forward 867.12.6

Brought Forward 867.12.6

1840

June 20, To Deal, Beech, Screws, Nails, Tacks, iron
Rollers, Brackets &c. used in the fixing } 1.10.

To an Overplus of fixing Materials as Drawing
Line, rod hooks, side pullies, angle brackets,
driving brackets, sent, not returned & to be
credited when returned } "15"

To Several Workwomen's Time at Carlton House
covering with different sorts of paper all the Gilt
Chairs, Bergeres, Cabriole Chairs, large
Bedstead which are all covered with blue embroi-
-dered satin & belong to the new bed room,
afterwards removing the whole to be Warehouse
in the pediment } 6.10.

To 6 Quires of silver Paper used P¹¹ "5.6

To 10 " whited brown Paper P⁷ "5.10

To 9 " brown Paper P⁴ "9"

To Sealing Thread, Dutch Twine & whited
brown Thread used } "6"

Carried Forward 877.13.10

Brought Forward 877.13.10

Lower Room next to Library

1810

June 20 To Altering your 2 Banquets, by Ripping the Stuffing
and Covering, Rounding the Corners of the frames
Restuffing the same with an addition of new
materials, a new back cushion to each, Covered
with your scarlet cloth, ornamented with
new appliqué velvet Border, the legs, rebrazed
& fixed under the rounded corners / Sent to
Carlton House April 6. 1810

5.18.

✓ L

883.11.10

Inspected

Benjamin Gutcham

